

Administrator's Pak™

Six Powerful Tools for System Repair, Data Recovery, and Troubleshooting

1 ERD Commander 2003™



ERD Commander 2003 is a powerful, easy-to-use utility for repairing dead and locked-out Windows NT4/2000/XP/Server 2003 machines. ERD Commander 2003 allows you to bypass the OS of a dead system and boot into a self-contained windowing environment with full access to the damaged machine's volumes and configuration settings. The ERD Commander 2003 environment offers you numerous repair, data recovery, and diagnostic tools to identify and correct problems on the dead computer, and includes support for network access so that you can move data to or from the system.

With ERD Commander 2003, you can repair DEAD SYSTEMS using the following tools:

- Locksmith: Change Administrator or other passwords
- Disk Commander: Repair damaged partition tables and retrieve data from corrupted or deleted volumes
- Service and Driver Manager: Enable or disable services and drivers
- RegEdit: Import and export registry files
- FileRestore: Quickly find and recover deleted files



- File Explorer: Copy and move files
- Disk Management: Partition disks and create or format volumes
- System Compare: Compare the files/services/drivers of an unbootable system and a functioning system
- System Restore: Rollback Windows XP systems to a working state
- Console: Run batch files or CHKDSK from a command prompt
- Notepad: Edit/create text-based files such as INI files
- File Sharing: Copy files to or from a dead system via the network
- Search: Quickly locate files and folders
- Event Log: Review System, Security, and Application logs
- System Info: View the dead system's OS info, service packs, and configuration
- TCP/IP Configuration: Customize NIC settings for network access
- Volumes: View detailed info on logical and physical drives

Winternals Product Assurance

Winternals Product Assurance is a cost-effective way to maximize the value of your organization's investment in Winternals products. Winternals Product Assurance delivers three powerful benefits — software maintenance, telephone support, and price protection — all with one cost-effective purchase.

Telephone Support

- Exclusive access to Winternals telephone technical support

Software Maintenance

- Free access to new releases of your covered products
- Automatic notification about updates, patches, and fixes to existing versions of your covered products
- Early access to beta versions of new products

Price Protection

- Price protection to ensure future product purchases at the same discount as your original volume price

To order Product Assurance, or if you require a quote, please call **1-800-408-8415** or e-mail sales@winternals.com.



SYSTEM REPAIR



DATA RECOVERY



TROUBLESHOOTING

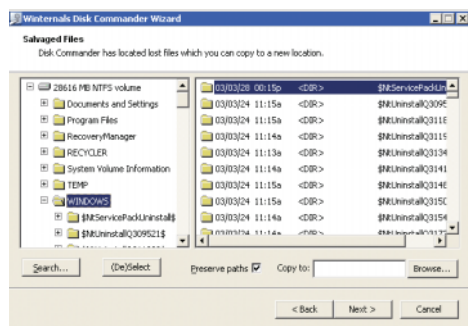
Winternals

Administrator's Pak – System repair, data recovery, and troubleshooting

2 Disk Commander™

Disk Commander works in the ERD Commander 2003 environment to address your most challenging issues of file system damage and lost data. With it you can boot and repair systems rendered unbootable by file system damage, including errors in partition tables, boot sectors, and MBRs. Disk Commander scans disks and presents an Explorer-like display of the results. It then lets you restore volumes — such as those deleted by FDISK or Disk Administrator — and select specific files and directories to recover.

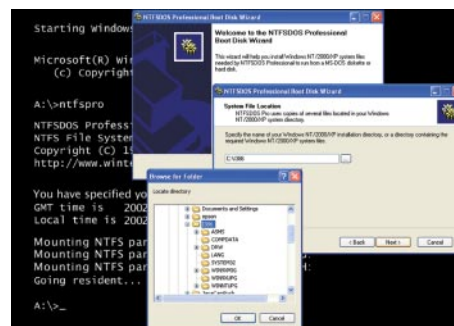
- Salvages data from unbootable systems
- Scans entire disks for lost or corrupt volumes
- Allows recovered files to be copied to a working drive
- Restores volumes and repairs the MBR
- Compatible with Windows 9x/NT4/Me/2000/XP/Server 2003



3 NTFSDOS Professional™

With NTFSDOS Professional, you can access the NTFS volumes on a Windows NT4/2000/XP/Server 2003 system that is unbootable due to damaged, missing, or misconfigured system files. Use the NTFSDOS Professional DOS boot diskette to access NTFS volumes from a DOS prompt and restore systems to a bootable condition. It provides unrestricted read/write access to NTFS partitions so you can run third-party applications such as virus scanners or disk imaging software, as well as the NTFSCCHK Check Disk program to verify and repair the NTFS disk structure.

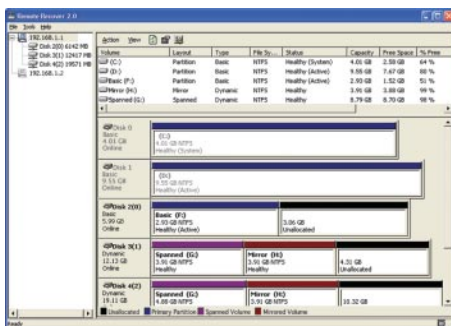
- Provides full read/write access to NTFS volumes
- Supports long file names under MS-DOS
- Supports running of CHKDSK from within DOS
- Works with DOS antivirus tools to safely scan and clean systems while they are offline



4 Remote Recover™

Remote Recover is a client/host tool for remotely repairing unbootable systems. With Remote Recover, you boot the dead system to a diskette-based client or PXE-boot image, then mount its volumes on your host system for repairs. You'll be able to perform any operation on the client system that you can perform on the host system's local drives, and can move data off the client system at network speeds. Remote Recover includes the Locksmith utility to change local administrator passwords on the client.

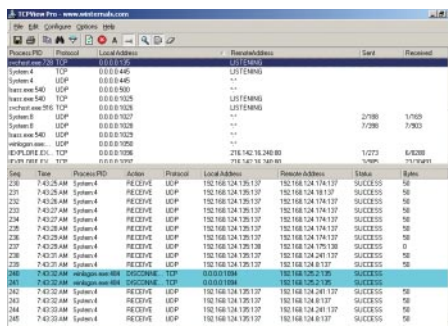
- Salvages and backs up data from drives on unbootable systems
- Supports PXE boot
- Includes the Locksmith utility to change administrator passwords on client system
- Runs CHKDSK or other disk repair software
- Designed for Windows NT4/2000/XP/Server 2003



5 TCPView Professional™

With TCPView Professional Edition, you can easily monitor TCP/IP network activity on Windows systems. It shows you the process associated with each TCP/IP address in real-time, making it easy to determine the application responsible for specific connections and activity. It also lets you see the amount of data sent and received over a network connection. A range of configuration options let you auto-refresh its display, save output to a file, and filter and highlight entries by process, IP address, or port.

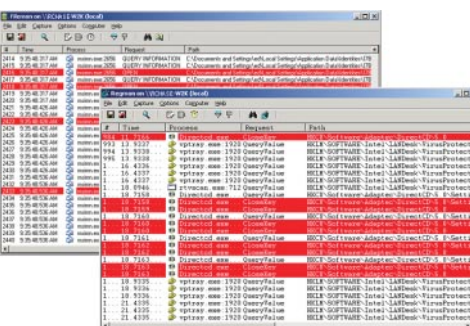
- Provides a continuous, real-time display of all TCP/IP activity
- Shows which process has an address opened
- Displays the IP addresses that individual processes are accessing
- Indicates the amount of data being sent and received
- Can be configured to capture only activity from selected processes or IP addresses



6 Monitoring Tools™

Monitoring Tools include Filemon Enterprise Edition and Regmon Enterprise Edition. With Monitoring Tools you can track file system and registry activity on local and remote systems. Quickly find file accesses that coincide with error messages to identify missing, corrupt, duplicate, and out-of-date files. Real-time reports of Registry accesses help you to pinpoint and correct faulty registry settings, learn where registry settings are stored, and learn which keys affect application behavior.

- Indicate when each access is performed and by which application
- Display data on all file and registry activity on your local system
- Automatically highlight the types of output that you select
- Compatible with Windows NT4/2000/XP/Server 2003



Licensing

Winternals Administrator's Pak is licensed by node. The license is designed so that the Administrator's Pak will only function within domains specified on your activation key. In the event that you have machines that are not part of a domain, the Administrator's Pak can also be locked to a specific machine name.

For additional information on Winternals licensing, please contact your Account Executive at **1-800-408-8415** or at **sales@winternals.com**.

"Winternals tools can be a lifesaver for many tough spots. You owe it to yourself at least to look them over. Like the original Norton Utilities, they probably do something you wouldn't have thought possible."

Larry Seltzer
ZDNet

Winternals

System Requirements

1. ERD Commander 2003

ERD Commander 2003 requires that the target system have a bootable CD-ROM, and one of the following operating systems:

- Windows NT 4
- Windows 2000
- Windows XP
- Server 2003

Regardless of operating system, ERD Commander 2003 requires a minimum of 64MB of system memory and an x86 233MHz processor.

Note that ERD Commander 2003 also gives you access to the drives of Windows 95, 98, and Me systems, although many utilities, such as the password changer, Registry editor and Event Log viewer do not function when accessing installations of those operating system versions.

The ERD Commander 2003 Boot CD-ROM Wizard runs on Windows 95, 98, Me, NT, 2000, XP, and Server 2003.

2. Disk Commander

Disk Commander operates within the ERD Commander 2003 boot environment and shares the ERD Commander 2003 requirements.

3. NTFSDOS Professional

NTFSDOS Professional requires a working Windows NT4/2000/XP/Server 2003 Workstation or Server installation, a licensed MS-DOS 7.0 or higher boot diskette, and 2 to 3 blank diskettes. NTFSDOS Professional does not recognize software volume sets, striped sets, or mirror sets.

4. Remote Recover

You must have the following components in order to install and run Remote Recover:

- A Windows NT 4.0 Workstation, Server (Service Pack 6 or higher), Windows 2000 Professional, Windows XP Professional, Windows 2000 Server, or Windows Server 2003 installation.
- Internet Explorer ® 4.0 or higher.
- Network using the TCP/IP protocol.
- A network interface card and corresponding NDIS2 driver for each client system.

If you choose to boot client systems using a Remote Recover client floppy disk:

- A formatted floppy diskette for each client boot diskette you require.

If you choose to boot client systems using the Remote Recover PXE boot image:

- A DHCP server that supports the PXE boot protocol. The client system must have a network interface card that implements PXE.

5. TCPView Professional Edition

TCPView Pro runs on all Windows platforms; on Windows 95 you will need COMCTL32.DLL version 4.7 or higher and the Windows 95 WinSock 2 Update.

6. Monitoring Tools

Monitoring Tools works on all Windows platforms. You must use TCP/IP on your network to access other computers on your network. If you wish to run Monitoring Tools on Windows 95 you must install the WinSock2 update.

Winternals

3101 Bee Caves Road
Suite 150
Austin, TX 78746
www.winternals.com
Ph 512.330.9130
Fax 512.330.9131
Sales 800.408.8415