

# High Availability

can never be fully achieved without reliability. Only Neverfail SCOPE can deliver solid reliability by creating and maintaining a stable and healthy server environment.



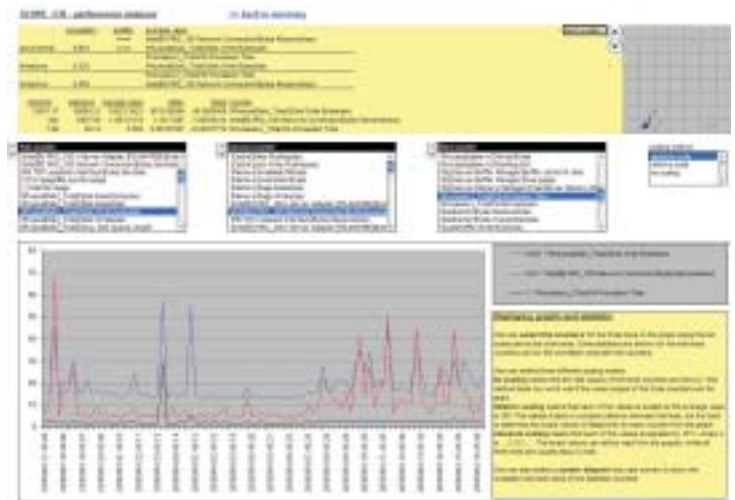
The prerequisite for the successful implementation and ongoing performance of any cluster-class high application availability solution, including Neverfail, is a sound and stable technology platform. Almost every software replication and clustering software solution on the market addresses availability, but that is only half of the High Availability equation. Neverfail is unique in proactively addressing reliability as a critical component of a true High Availability Solution for Microsoft Windows 2000/2003 servers.

Neverfail Server Check Optimization Performance Evaluation (SCOPE) is a combination of software and process that ensures maximum server reliability. It uses advanced, automated tools that provide detailed information about the current running state of your server environment and it provides recommendations to establish an optimum platform for long-term reliability. Think of Neverfail SCOPE as a complete server "check-up" to ensure that any problems existing on your primary server are addressed prior to implementation of a High Availability solution and to provide live production "snapshots" of your system's ongoing reliability.

## Why SCOPE out your server's reliability?

Accurately determining the reliability of your server environment requires detailed examination of the operating system, all hardware components, all software applications and network performance. Most organizations lack the financial and physical resources to undertake such a daunting task, and as a result, system slowdown or shutdown arises from issues that, if identified and addressed in advance, could have been avoided.

The disastrous effects of unplanned downtime can be avoided by implementing a high availability solution such as Neverfail, but while availability software substantially reduces recovery time, it does not address the underlying system and configuration issues that might cause a failure to begin with. Remedial actions may get the server operational again, but they do not identify the cause of the failure. Over time, the health and stability of the failed server deteriorates, increasing the likelihood of another failure.



*Detailed, graphical analyses of key system performance metrics ensures the reliability of your server.*



## **Increasing reliability and availability is the only way to increase server uptime.**

Almost all software replication and clustering software solutions address availability, but only Neverfail SCOPE proactively addresses reliability as a crucial component of any High Availability solution.

### **Reliability**

Ensuring proper operation and configuration of the system environment and addressing known issues before they result in a failure.

### **Availability**

Providing the seamless fail-over and rapid recovery that enables the user to stay connected to a live application if a failure occurs.

High Availability solutions are not intended to identify or resolve existing server reliability issues; instead, they are purposed to deliver a faster route to recovery after failure. It is only when reliability and availability are addressed and combined that you can achieve your objective: minimal downtime with minimal physical resources.

## **Neverfail SCOPE Summary**

At Neverfail, we strongly believe that a proactive approach to application failure results in substantially more application uptime than a reactive approach. With Neverfail SCOPE, you can diagnose the overall health, stability, and reliability of your existing server environment prior to implementing a High Availability solution and over the life of your server. Scope out what the competition has to offer— no other High Availability solutions vendors can offer you a proactive approach to ensuring application uptime like Neverfail SCOPE.

## **KEY FEATURES**

### **Automatically collects configuration and environmental information**

- At the push of a button, SCOPE collects all vital information associated with a server's configuration and environment.
- Saves time by automatically assembling environmental information which would normally take hours to collect manually.

### **Unobtrusively collects detailed performance information**

- Runs for a specified period of time collecting detailed performance information associated with a server and network.
- Reduces IT resources' time by automatically collecting performance information which would normally take hours or days to collect and collate manually.

### **Validates configuration information and makes change recommendations**

- Compares collected configuration information to Microsoft and Neverfail recommended best-practices settings and suggest changes to the configuration.
- Improves availability by addressing one of the most important aspect of uptime - Configuration Reliability.

### **Analyzes server workload characteristics**

- Workload characteristics are analyzed to identify potential bottlenecks and performance anomalies.
- Improves availability by helping to identify workload and operational performance issues.

### **Analyzes bandwidth usage**

- Analyzes actual bandwidth usage of Neverfail based on server specific workload. Where bandwidth or network utilization is an issue or needs to be reduced, the Neverfail Low Bandwidth Module (LBM) is available to optimize and reduce the amount of data that is transmitted between the two servers.
- Saves time associated with WAN implementations by identifying network bandwidth issues before installation.

### **Enables "what if" network modeling**

- Allows multiple and different types of "what if" modeling against bandwidth size and characteristics.
- Saves money by enabling better planning and avoidance of over-purchasing network capacity.

### **For more information, contact Neverfail:**

#### **North America**

t. 512-327-5777 x 1800  
email [info@us.neverfailgroup.com](mailto:info@us.neverfailgroup.com)

#### **Europe**

t. +44 (0) 870 777 1500  
email [info@neverfailgroup.com](mailto:info@neverfailgroup.com)  
web [www.neverfailgroup.com](http://www.neverfailgroup.com)

**neverfail**<sup>™</sup>